

Innovation Ecosystem

Sunil Abraham
Centre for Internet and Society

Space

TO CATALYZE THE KENYAN TECH COMMUNITY'S GROWTH.



*iHub Research

KNOWLEDGE . DISCOVERY . SHARING

KNOWLEDGE . DISCOVERY . SHARING

iHub Research works from within the nerve center of Kenya's technology community. The organization has expertise in technology research and facilitates local ICT research capacity in the region. iHub Research shares stories about the vibrant East African technology community by conducting ICT research on technology innovation within the community.

We aim to change the ICT Research landscape in Africa by bringing together researchers from around the continent to collaborate and build greater African scholarship.

[READ MORE](#)



IHUB STATISTICS

- 539** Total events
- 1149** Total jobs
- 15036** Total members
- 152** Total companies
- 0** Total blog posts

MEMBERSHIPS

POST A JOB

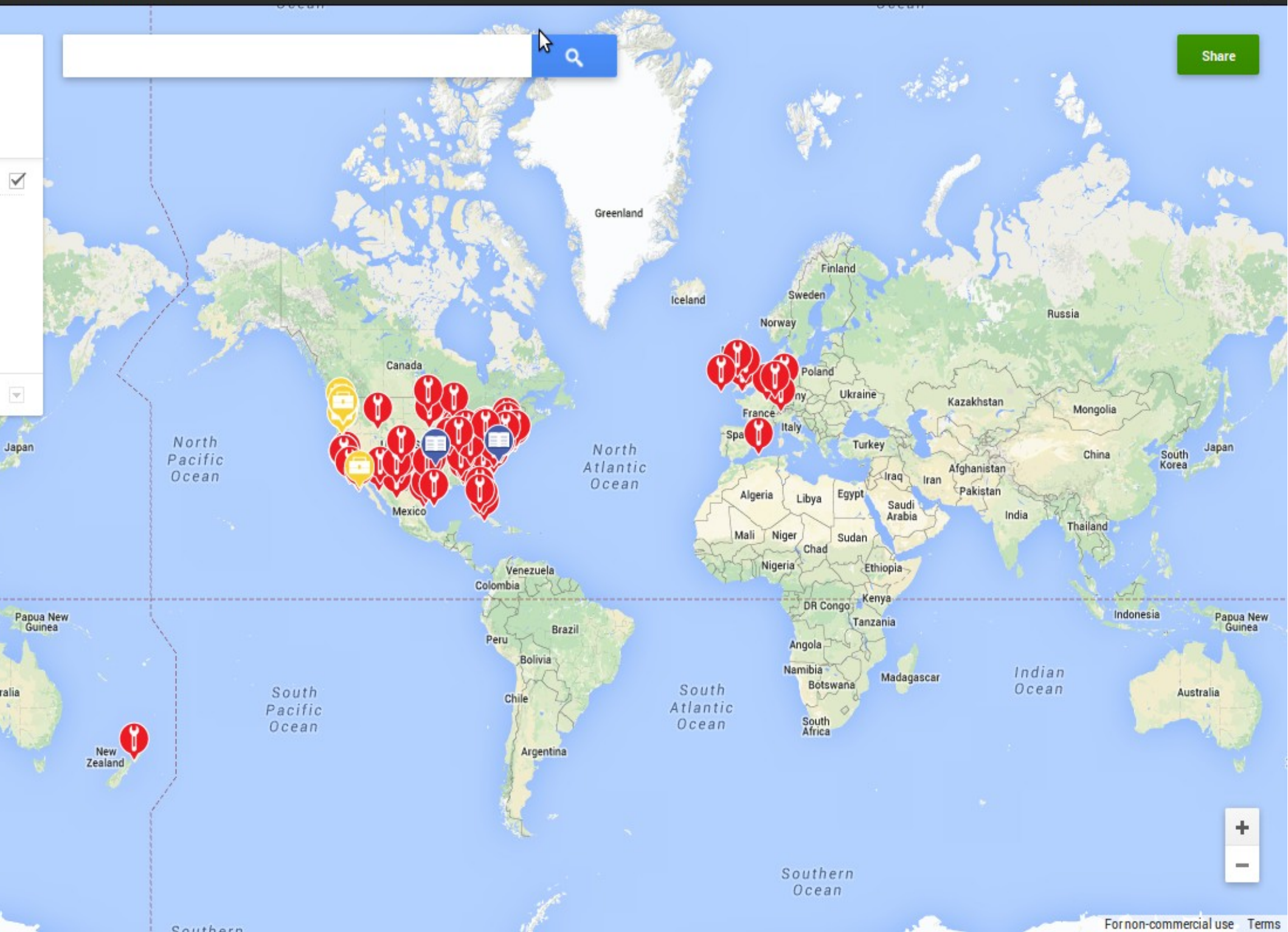
[REGISTER NOW FOR THE KENYA LEAN SERIE ...](#)

[CURRENTLY AT IHUB](#)

[EVENTS BOARD](#)

Search bar with magnifying glass icon

Share





Internet Indonesia, Kumaha Damang? | Sabtu, 12 Juli 2014

[Calendar](#)



नालीबेली

विकि भनेको यस्तो ठाउँ हो, जहाँ आफुले थाहा पाएका सूचना राख्न र अरुले राखेका सूचना लिन सकिन्छ । हाम्रो विकिको नाम नालीबेली हो । नालीबेली भन्नाले जुन सुकै कुराको बिस्तृत रुपमा बेलिबिस्तार लगाउनु भन्ने बुझिन्छ ।



निर्वाचन अड्कलन सफ्टवेर

यस सफ्टवेरबाट निर्वाचनको नतिजा आफैले अड्कल गर्न सकिन्छ । यस सफ्टवेरको नाम 'कसको कति सीट ? तपाईंको अनुमान!' हो ।



फंड्स

गल्ली-गल्ली एउटा मुनाफा वितरण नगर्ने कम्पनि हो । हामीहरुले जे कुरामा जति खर्च गर्छौं त्यसको दैनिक बिस्तृत विवरण यहाँ बाट पनि हेर्न सकिन्छ ।

MYANMAR'S FIRST START-UP INCUBATOR



PROJECT HUB YANGON

WHAT IS PROJECT HUB YANGON?

BIG NEWS!! LAUNCH OF PROJECT - W

Time

delhi.startupweekend.org

Startup Weekend Delhi Governance Edition


11-13 April 2014
@Adianta School for Leadership and Innovation
Chattarpur Enclave, New Delhi
(Near Qutab Minar Metro Station)



Past event...

APR 11 2014

Event Ended

 Adianta School of Leadership

 Global

 FAQ +

Startu

India Na

10
S T



Past Speakers





It's BIG



Technology



Creative



Entrepreneur



General

Feb 1st and 2nd, 8:00AM to 5:00PM

 MICT Park, Hlaing, Yangon, Myanmar

Official Partners



Money

KiiCS workshops to discover biotech

Running DNA tests, creating electricity with biologic materials or using muscle power to make sounds? Within three interactive workshops Waag Society showed youngsters between 14 and 17 years old what biotech is all about.



© Waag Society 2013

Projects overview



2013

The Future of Art & Science collaborations

2012

Do It Together Bio
PICNIC Festival

2010

Designers & Artists 4 Genomics Award

[Open Wetlab](#)

Events

Saturday 21 June 2014

The Romantic Disease exhibition

Time: 11:00 to 17:00

Exhibition at the Theatrum Anatomicum of the Waag. Open Thursday to Sunday.

[more](#)

People



Links

- [Newsletter subscription](#)
- [Open Wetlab FAQ](#)
- [Open Wetlab safety training](#)
- [Open Wtlab meetup group](#)

Basic The recommended equipment and materials to introduce this module into your Makerspace. We selected items that keep the cost low while making sure that the tools are the most useful and the materials are easy to work with.

Intermediate This level allows Makers to create more ambitious projects and work with a wider range of materials with greater precision. In most modules the Intermediate tools and materials are added to the Basic set allowing a space to advance over time. When an identical item is listed twice, additional numbers are suggested for an Intermediate space.

Key

	Basic Makerspace Only
	Intermediate Makerspace Only
	Both Basic and Intermediate.

Class Size

The tool count, workspace size, and material totals are for a typical class of 25 students. When outfitting your space, add or subtract equipment appropriate to your class size. Consumables and upkeep costs are estimates for 25 students using the space for 70 to 100 hours. This is roughly a semester of two 2-hour sessions per week, plus some individual extracurricular time.

Costs

We assume you will start your Makerspace from bare walls and will buy all equipment and materials new. We do not account for existing, built, donated, or salvaged equipment or materials. Upkeep covers the cost of replenishing consumables and materials plus wear and tear for a single class of 25. We do not include infrastructure costs such as utilities or staffing. This chart shows the estimated costs for each module and level.

Module	Basic	Startup	Subtotal	Upkeep	Intermediate	Startup	Subtotal	Upkeep
Workspace		\$3,326	\$3,326	\$50	Tools	\$3,644	\$3,644	\$75
General	Tools	\$1,830	\$2,559	\$350	Tools	\$2,830	\$3,820	\$550
	Materials	\$729			Materials	\$990		
Woodworking	Tools	\$1047	\$1,135	\$120	Tools	\$1,894	\$2,058	\$200
	Materials	\$88			Materials	\$164		
Metalworking	Tools	\$766	\$1,468	\$160	Tools	\$3,702	\$4,656	\$400
	Materials	\$702			Materials	\$954		
Electronics	Tools	\$596	\$1,402	\$80	Tools	\$1,395	\$3,008	\$300
	Materials	\$211			Materials	\$302		
	Microcontrollers & Robotics	\$595			Microcontrollers & Robotics	\$1,311		
Textiles	Tools	\$332	\$538	\$60	Tools	\$821	\$1,031	\$100
	Materials	\$140			Materials	\$278		
	Soft Circuits	\$66			Soft Circuits	\$232		
Computers			\$3,883	\$30		\$4,773		\$60
3D Printing						\$2,240		\$50
Laser Cutting					Tools	\$11,812	\$12,142	\$400
					Materials	\$330		
CNC Cutting					Tools	\$5740	\$5816	\$250
					Materials	\$76		

Community and Private Sector



PyCon India

2014 Bangalore

PyCon India, the premier conference in India on using and developing the Python programming language is conducted annually by the Python developer community. It attracts the best Python programmers from across the country and abroad.

Workshops

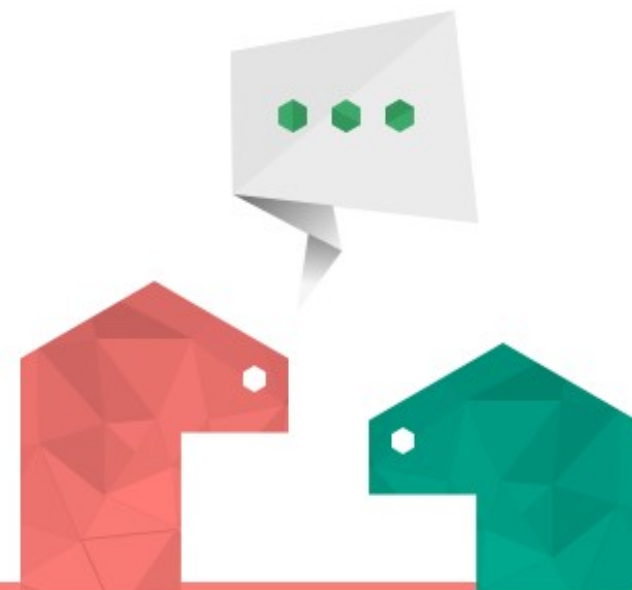
26 September

Conference

27 - 28 September

[BUY WORKSHOP TICKETS](#)

[BUY CONFERENCE TICKETS](#)



[SPEAKERS](#)

[SCHEDULE](#)

[VENUE](#)

[SPONSORS](#)

[BLOG](#)

[CODE OF CONDUCT](#)

[FAQ](#)

[Call for Sponsors](#)

[Call for Votes](#)

[Call for Volunteers](#)



We are HasGeek. We create discussion spaces for geeks. Come to our events to meet like-minded people, learn new things and discover opportunities.

We operate a popular [job board](#), hang out in an [IRC channel](#), and publish our [code](#). We arrange [geekups](#) with visiting geeks and host a [hacknight](#) every month.

Our activities reach thousands of developers every month. Attend [our events](#), or [sign up to be notified](#) when we do one. We are on [HasGeek TV](#). Coming up:

The Fifth Elephant 2014
 Wed, Jul 23 - Sat, Jul 26

On big data and analytics

Inbox Alert
 TBD in Jul/Aug, Bangalore

On the delivery of notifications

JSFoo 2014
 Wed, Sep 17 - Sat, Sep 20

On JavaScript

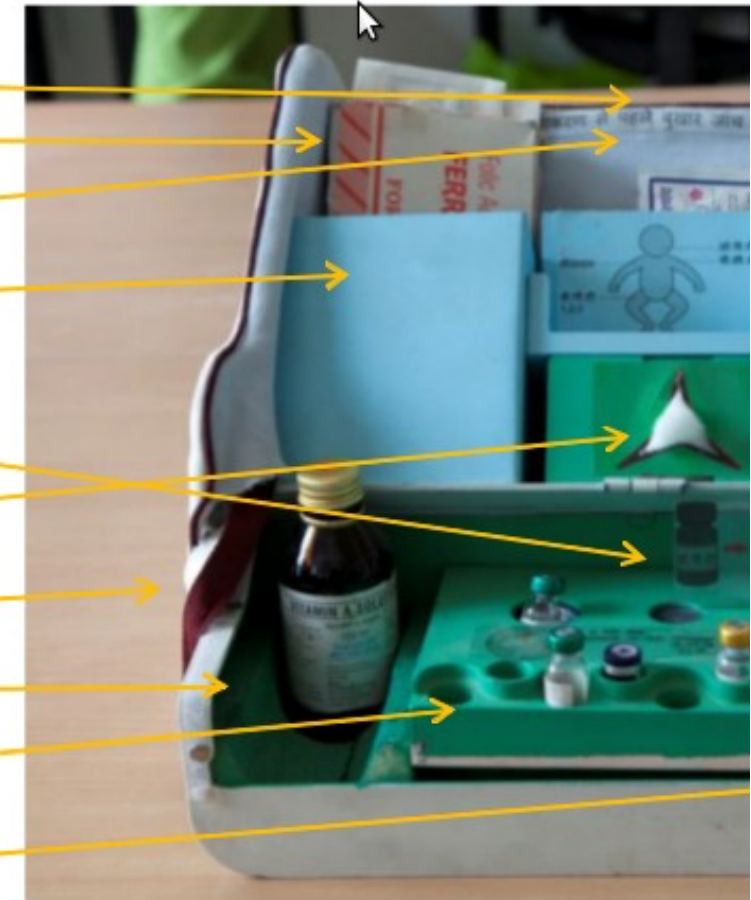
Previously: [Rootconf 2014](#), [Redis Miniconf](#), [Meta Refresh 2014](#), [AngularJS Miniconf](#), [Droidcon India 2013](#), [JSFoo 2013](#), [Responsive workshop](#), [HasGeek TV workshop](#), [Advanced Python workshop](#), [Git workshop](#), [The Fifth Elephant 2013](#), [Pig workshop](#), [CSS for the Refresh 2013](#), [Droidcon India 2012](#), [JSFoo 2012](#), [Cartonama Conference](#), [The Fifth Elephant 2012](#), [Rootconf](#), [Meta Refresh 2012](#), [Cartonama Workshop](#), [JSFoo 2011-12](#) (in Bangalore, Pune and Chennai), [Droidcon India 2011](#), [Scaling PHP in the Cloud](#), [AndroidCamp](#) and

reach to a disorganized spread of inventory. On the beneficiary side, they looked at perceptions of quality care and how the current manner of handling medical equipment impacted these perceptions.

Designers visualized this rich data in diagrammatic forms that

'Bas kaam pe kaam dete hai, koi management k acche sab se bana hai, isse hum acche se sara k just give more and more tasks to do, no-or will be managed, this is well-organized, w manage all of it well)' - Malti Devi*, ANM

- RI Card Input Slot
- Flexible slots for health and nutrition inventory
- Info-graphics on best practices
- One pull action CottonDispenser
- Incline adjustable base
- Vitamin - A soft padded slot.
- Insulation Jacket for to maintain the temperature of in use vials.
- Paracetamol Slot with Pill Cutter.



It was recognized that many solutions; policies, protocols and technologies, are built in intellectual isolation from the context. Solutions not only fail to address the real challenge, but causes further disruption, discomfort and fatigue to the user using them. By employing the user-centered innovation approach the collective team acknowledged that products and technologies are not designed in isolation. To design a total public health system or a public services delivery system. The challenge must first be understood in its entire context. Contextually appropriate solutions must be created, it be they information, interactive, process oriented, service or a product.

Policy

Policies

- Patent Law
- Copyright Law
- Free/Open Source Software Policy
- Open Standards Policy
- Open Data Policy
- Innovation Policy
- Manufacturing Policy

Datameet is a community of Data Science and Open Data enthusiasts.

BANGALORE

CHENNAI

DELHI

HYDERABAD

CITIES

Bangalore

Chennai

Delhi

Hyderabad

EVENTS

Data Workshops

DataMeet-Up

OpenDataCamp

Scrapathon

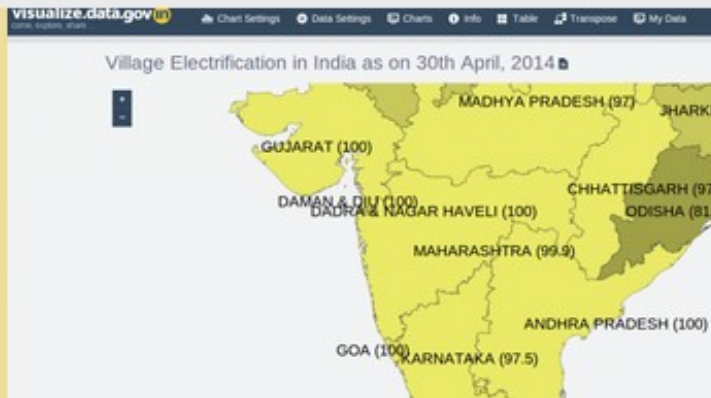
GeoBLR

SUBSCRIBE TO BLOG VIA EMAIL



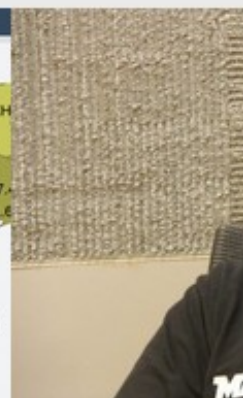
UNCATEGORIZED

THE FIFTH ELEPHANT 2014 IS HERE



OPEN DATA INDIA WATCH

OPEN DATA INDIA WATCH - 2



UNCATEGORIZED

DATAMEET S



UNCATEGORIZED

PRESENTING THE DATAMEET OFFICIAL LOGO!



OPENDATACAMP

[ODCBLR2014] PANEL DISCUSSION - HOW DO WE BUILD A CITIZEN IMS?



OPENDATACAMP

[ODCBLR2014] KRISHNAMURTHY

Thank you for patience!

sunil@cis-india.org +91 9611100817 @sunil_abraham